

SINGLE – PHASE INDUCTION MOTORS DESIGNED

rated voltage 230 V – 50 Hz

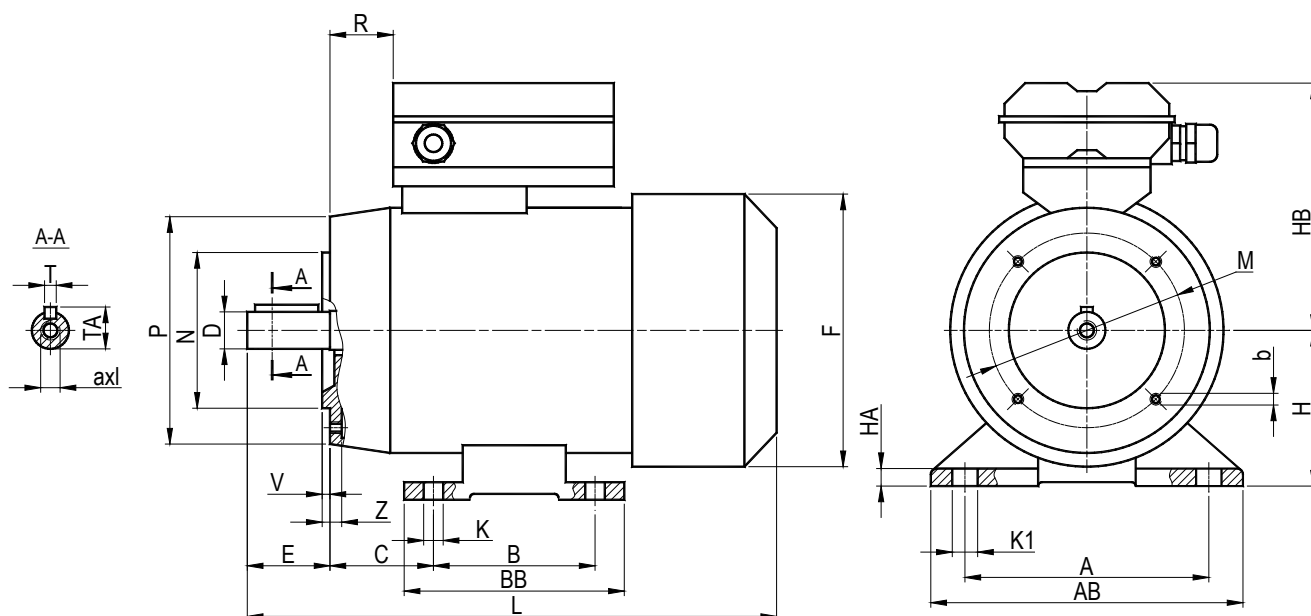
degree of protection: IP54 insulation class F; duty S1; temp. -15°C to +40°C

PN-EN60034-1

IEC 60034-1

CE mark

Construction form B34



type	dimension [mm]																			shaft				
	A	B	C	F	H	HB	K	K1	L	M	N	P	R	BB	AB	V	HA	Z	b	D	a x l	E	T [h9]	TA
SMLKF 56 A/B	90	71	36	110	56	104	6	8	187	65	50	80	17	90	107	2	7	6	M5	9 j6	M4x10	20	3	10
SMLKF 63 A/B	100	80	40	125	63	108	7	10	205	75	60	90	18	100	120	2	7	6	M5	11 j6	M4x10	23	4	12
SMLKF 71 A/B	112	90	45	141	71	122	7	11	244	85	70	105	18	112	135	2	8	8	M6	14 j6	M5x15	30	5	16
SMLKF 80 A/B	125	100	50	159	80	139	9	13	275	100	80	120	25	125	153	3	12	12	M6	19 j6	M6x15	40	6	21
SMLKF 90S	140	100	56	176	90	146	10	13	305	115	95	140	32	130	170	3	13	10	M8	24 j6	M8x20	50	8	27
SMLKF 90L	140	125	56	176	90	146	10	13	330	115	95	140	32	155	170	3	13	10	M8	24 j6	M8x20	50	8	27